

ARTIFICIAL INTELLIGENCE (AI) ENGINEER

DEVELOPS AI-BASED SOLUTIONS TO ADDRESS PROBLEMS AND
DEVELOP INTELLIGENT SYSTEMS

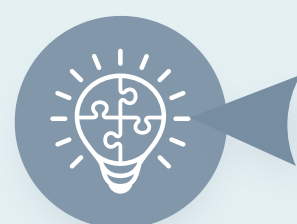
HIGH

**FUTURE GROWTH POTENTIAL
IN THE LABOUR MARKET**

High foreseen impact on
social and technological
change

Focus on personalised
recommendations, demand forecasts,
supply chain optimisation, customer
sentiment analysis and chatbot-based
customer support

SKILLS REQUIRED



Problem-solving

Finding solutions to difficult or
complex issue



Critical thinking

Thinking clearly to understand the
logical connection between ideas



Data processing and analysis

Converting data into
understandable information



Computing and information technology

Carrying out diverse tasks using
different types of technology

LABOUR MARKET TRENDS



Main areas are research & development, financial
technology (fintech), health, e-commerce & retail,
transportation, manufacturing and energy



Significant increase in companies' adoption of
AI technologies to improve efficiency, make
data-driven decisions and enhance customer
experience



Surge in AI-focused innovation-based
startups in need for such AI professionals

EDUCATION & TRAINING

Proficiency in programming
languages, data structures,
algorithms and software engineering
principles

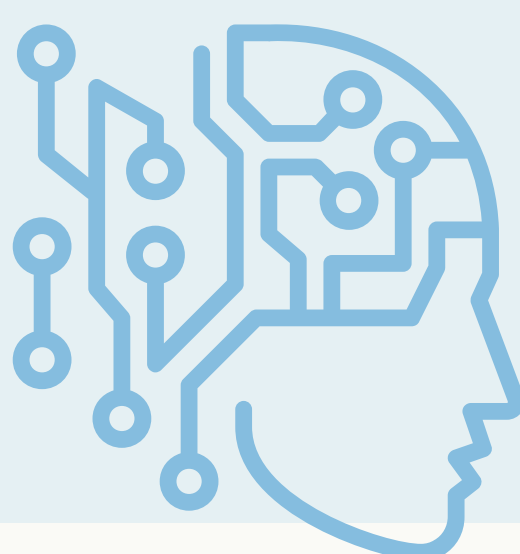
Solid understanding of mathematics
and statistics (including modeling)

CHALLENGES AND OPPORTUNITIES

Competitive salaries and benefits due to
AI professionals shortage

AI is a rapidly evolving field and allows the
exploitation of new ideas and solutions

Need for continuous upskilling and
awareness on ethical responsibility



Key areas

Technology
Mathematics

